

A female scientist with dark hair, wearing safety glasses and a white lab coat over a dark blue shirt, is focused on her work in a laboratory. She is using a pipette to transfer liquid into a test tube. The background is a blurred laboratory setting with various pieces of equipment.

zühlke
empowering ideas

Zühlke in Healthcare

We help clients succeed in a complex world filled with uncertainty and opportunity

Facts & figures



- » Austria
Vienna
- » Bulgaria
Sofia
- » Germany
Frankfurt
Hamburg
Hannover
Munich
Stuttgart
- » Hong Kong
Hong Kong
- » Portugal
Porto
- » Serbia
Belgrade
- » Singapore
Singapore
- » Switzerland
Bern
Zurich
- » United Kingdom
Edinburgh
London
Manchester
- » Vietnam
Ho Chi Minh City



Founded
in 1968



17 offices in
10 countries



1,900 employees
worldwide



The Zühlke
Group is owned
by partners



Certifications:
ISO 9001,
ISO 13485,
ISO 27001



We put data
at the heart of
everything we do



Sustainability focus:
climate action and
health improvement

We empower global healthcare through our client network

Collaborating with regional and global clients to advance health outcomes



MedTech & HealthTech



Pharma and Life Sciences



Healthcare



10,000+ Projects successfully completed

Services and Focus Areas

Our capabilities and expertise

01 Healthcare Innovation



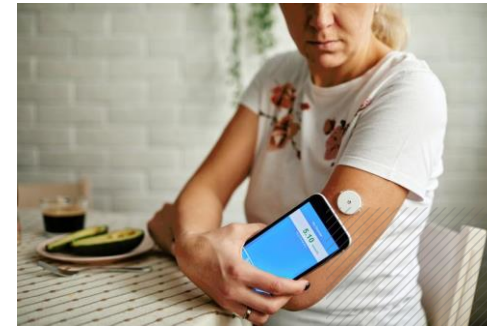
We advise clients on organizational strategy, new products and services, effectiveness of core processes, and best practices of development according to GMP/MDR/IVDR

02 Digital Health Applications



We design, develop and operationalize medical software applications for patients, clinicians, and laboratories

03 Device & Systems Engineering



We support the development of innovative medical devices and systems. Our customers trust us: from design, through production to market launch

04 Smart Data & AI Lab



We help firms develop Medical AI solutions that generate real value, advise on the selection of data platforms and medical clouds, and support companies holistically on their data-driven journey

Exploring our capabilities

A comprehensive catalogue



Healthcare Innovation

Innovation

Transformation



Product & Service Design

UX Design

Customer Interfaces



Product & System Architecture

Architecture Foundations

Legacy System Integration

Microservices & API Architecture

Web and Mobile Architecture



Back-end development

Java, Kotlin

.NET

Database Modelling

Cloud Computing



Front-end development

Conversational Interfaces

Web Development

Mobile Development



Data Analytics

Data Visualisation

Data Engineering

Deep Learning / Machine Learning



DevOps

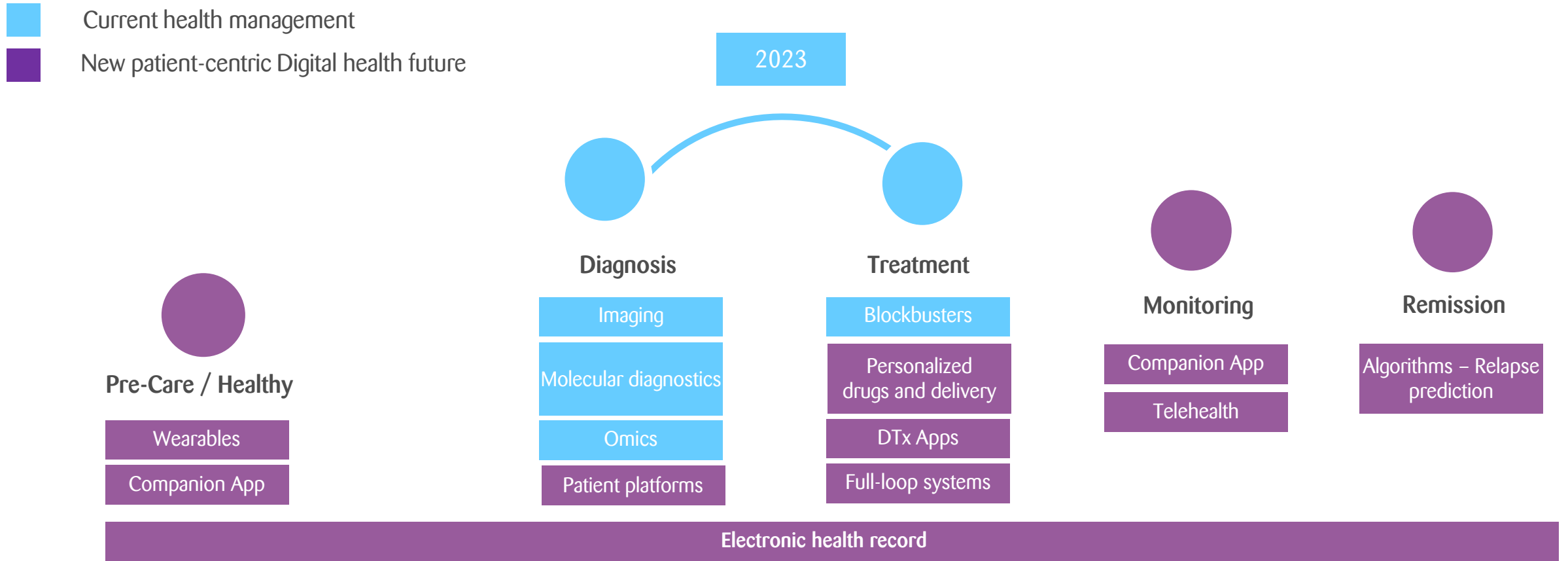
Site Reliability Engineering

Identity & Access Management

Project Management

We partner with you to embed innovation into the “Continuum of Care”

We support the conceptualisation and development of digital health tools at each stage of the patient journey



We are a certified development partner for major cloud suppliers

Partnering with leading cloud providers to support your journey to cloud

As a certified partner with leading cloud providers such as Microsoft, Google and AWS, we help to navigate and support your journey to a medical-grade cloud solution



Uses cases

- Mobile medical device
- Patient or physician medical app
- Remote monitoring by HCPs



Trends

- Advanced Managed Service by 3rd party (e.g. Zühlke)
- International roll-outs
- Data analytics and insights



Selection

- Based on detailed technical and economic assessment
- Based on requirements for scalability, security and more



aws partner network
Advanced Consulting Partner

Pioneering the development of regulated medical AI applications

We specialise in developing and operationalising regulated medical AI applications



Getting Regulatory Approval for AI

- Assessment of data quality and coverage
- Review of the data science process
- Consulting on documentation and validation



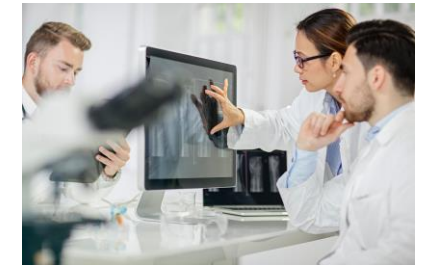
From Patient Data to Machine Learning

- Fast prototype using state-of-the-art ML methods
- Development of AI-based solutions based on our Machine Learning Process for Medical AI
- Compliant documentation of the research process



From Research to Production

- Operationalization of your ML prototype
- Integration into company IT landscape and clinicians workflows
- Ensuring reproducibility and explainability
- Building safe and validated solutions

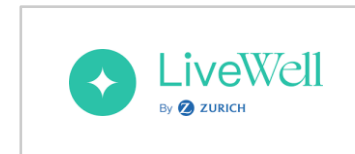
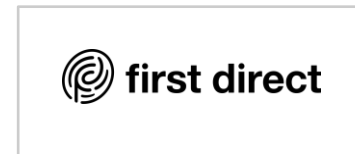
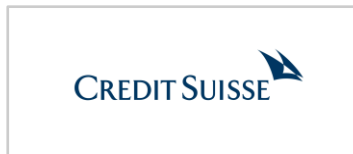


Medical Grade Data Platform

- Creating a cloud-neutral regulated Data & AI platform
- Production Grade secure & safe platform for sensitive data
- Enable state of the art ML e.g. federated learning, etc.

Our customer network

We bring learnings and ideas from multiple industries to you



Reach out to our
team for a 1-1
consultation



Nicolas Lai

Health & MedTech Lead
Southeast Asia

 +65 8780 2998

@ Nicolas.lai@zuhlke.com



Jim Lim

Head of Health &
MedTech Southeast Asia

 +65 6921 7800

@ Jim.Lim@zuhlke.com