

Project Note

Development of a new milk frother for the world market

In a short time and with new technologies Zühlke developed a new electrical appliance for heating up and frothing milk. By this way the „Aeroccino” comes on the world market on schedule.

Task

The company Nespresso develops and distributes high-end coffee machines, which are compatible with the Nespresso coffee capsules. New equipment for heating up and frothing milk will complete the existing product range. Zühlke developed this consumer product from concept to start of production. The goals of the new development are:

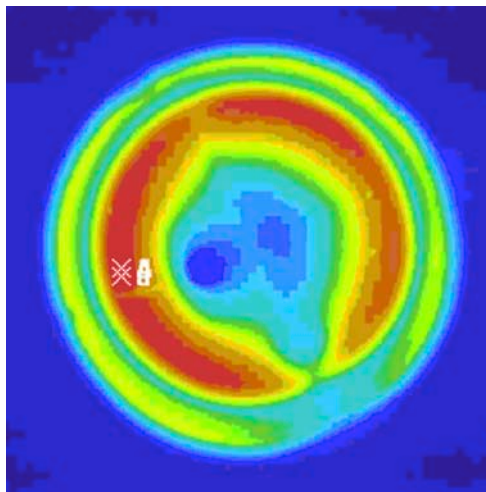
- Heating the milk/froth generation without steam
- Heating and frothing time is equal to the coffee preparation time
- One button operation
- Fulfilment of high safety standards
- Project responsibility from the concept phase to the delivery at the manufacturers
- Adherence to the tight schedule for the introduction into the market

Implementation

The development follows the Zühlke product development process (PEP):

- Preliminary study: Compile the customer requirements as well as the commercial and legal conditions and standards (work statement). Confirmation of the functional feasibility on the basis of laboratory models.
- System design: Provide product requirement specifications, preparation of the concept ideas and building of the first operating models
- Implementation: Conversion, build and test of the close-to-production prototypes
- Start of production: Provide the production documents and a transfer into production with the manufacturer.

The drive mechanism of the agitator is handled by a magnetic clutch. A newly patented thick film technology with integrated temperature monitoring ensures the adherence to the high safety requirements.



Technical Data:

Milk volume max:
200 ml

Power output:
450W

Powerinput:
100/120/230 V
– 50/60 Hz

Preparation time:
Milkfroth
(1 Cappuccino, 50 ml)
in 30s

Customer Advantages

- The risk-driven, phased advancement in the development makes short development times possible and saves costs.
- Successful deployment of new technologies through the broad know-how of Zühlke engineers

Zühlke Engineering AG
Wiesenstrasse 10a
8952 Schlieren (Zurich)
Switzerland

Phone +41 44 733 6611
Fax +41 44 733 6612
info@zuehlke.com
www.zuehlke.com