

Project Note

Visualisation System for Zurich Airport (Unique)

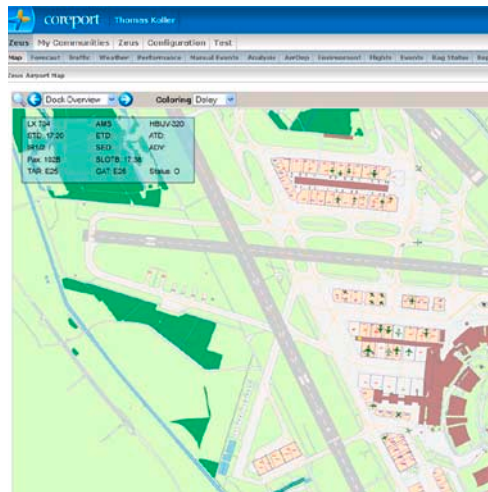
With a flexible development process, adapted to the customer's needs, Zühlke created a system for visualising process informations at the airport. New software releases were presented monthly to get an early feedback.

Task

The aviation industry is currently undergoing far-reaching consolidation and restructuring. To offset declining revenues, the airlines are trying to lower their costs any way that they can. As a result, supplier businesses are also feeling mounting financial pressure. Experience shows that this kind of uncoordinated optimisation usually worsens the overall quality of the airport's product. The task was to create a system for visualising as much of the existing process information at the airport as possible to assure optimum transparency in processes and services. Potential bottlenecks and financial consequences were to be pointed out early on so the trade-offs could be evaluated more easily. This, in turn, would improve decision making and ultimately allow solid service-level agreements to be defined. To this end, the project team developed a .NET-based system tailored to the customer.

Implementation

In light of the major technical challenge and the extensive requirements involved, the project called for a flexible development process like the iterative Rational Unified Process (RUP). In just 3 months, the team had completed an initial prototype of the software for the opening of the new organisational unit Airport Steering. The various airport systems were integrated via an IntegrationBroker using WebServices. This was done to assure the interoperability of future systems as well. To meet the tough requirements set for the user interface, the team used .NET Windows components. They, too, were able to be integrated flexibly into a browser-based portal solution.



Technical Data

- Development process: RUP
- Software architecture: Service and layer oriented
- Development: C#, VisualStudio .NET
- Communication: WebServices
- Integration: J2EE Integration Broker

Customer benefits

- Flexible development process adapted to the customer's needs
- Monthly software releases to assure early customer feedback
- Support from specialists in requirements engineering, usability and security

Zühlke Engineering AG
Wiesenstrasse 10a
8952 Schlieren (Zurich)
Switzerland
Phone +41 44 733 6611
Fax +41 44 733 6612
info@zuehlke.com
www.zuehlke.com